



# Title Plan - LT 546091

---

**Survey Number** LT 546091  
**Surveyor Reference** E19830 - Fairbairn Road  
**Surveyor** Christopher David Hawes  
**Survey Firm** Davie Lovell-Smith Ltd  
**Surveyor Declaration**

---

## Survey Details

**Dataset Description** Lots 1-19, 50 & 100 Being a Subdivision of Lot 1 DP 528962  
**Status** Initiated  
**Land District** Canterbury  
**Submitted Date**  
**Survey Class** Class A  
**Survey Approval Date**  
**Deposit Date**

---

## Territorial Authorities

Selwyn District

---

## Comprised In

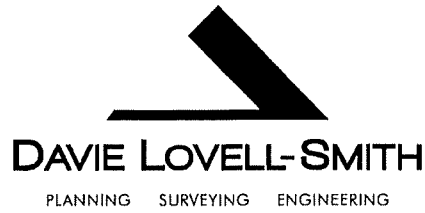
RT 857304

---

## Created Parcels

Parcels	Parcel Intent	Area	RT Reference
Lot 1 Deposited Plan 546091	Fee Simple Title	0.0615 Ha	928910
Lot 2 Deposited Plan 546091	Fee Simple Title	0.0582 Ha	928911
Lot 3 Deposited Plan 546091	Fee Simple Title	0.0606 Ha	928912
Lot 4 Deposited Plan 546091	Fee Simple Title	0.0607 Ha	928913
Lot 5 Deposited Plan 546091	Fee Simple Title	0.0586 Ha	928914
Lot 6 Deposited Plan 546091	Fee Simple Title	0.0550 Ha	928915
Lot 7 Deposited Plan 546091	Fee Simple Title	0.0537 Ha	928916
Lot 8 Deposited Plan 546091	Fee Simple Title	0.0568 Ha	928917
Lot 9 Deposited Plan 546091	Fee Simple Title	0.0625 Ha	928918
Lot 10 Deposited Plan 546091	Fee Simple Title	0.0751 Ha	928919
Lot 11 Deposited Plan 546091	Fee Simple Title	0.0583 Ha	928920
Lot 12 Deposited Plan 546091	Fee Simple Title	0.0670 Ha	928921
Lot 13 Deposited Plan 546091	Fee Simple Title	0.0647 Ha	928922
Lot 14 Deposited Plan 546091	Fee Simple Title	0.0600 Ha	928923
Lot 15 Deposited Plan 546091	Fee Simple Title	0.0603 Ha	928924
Lot 16 Deposited Plan 546091	Fee Simple Title	0.0624 Ha	928925
Lot 17 Deposited Plan 546091	Fee Simple Title	0.0649 Ha	928926
Lot 18 Deposited Plan 546091	Fee Simple Title	0.0568 Ha	928927
Lot 19 Deposited Plan 546091	Fee Simple Title	0.0653 Ha	928928
Lot 50 Deposited Plan 546091	Fee Simple Title	0.2063 Ha	
Lot 100 Deposited Plan 546091	Vesting on Deposit for Road	0.3836 Ha	928929
Area A Deposited Plan 546091	Easement		
<b>Total Area</b>		<b>1.7523 Ha</b>	

---



Davie, Lovell-Smith Ltd  
116 Wrights Road, Addington  
PO Box 679, Christchurch 8140  
New Zealand  
Telephone (03) 379-0793,  
E-mail: office@dls.co.nz

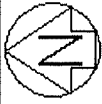
Our Ref: E19830

DP 546091

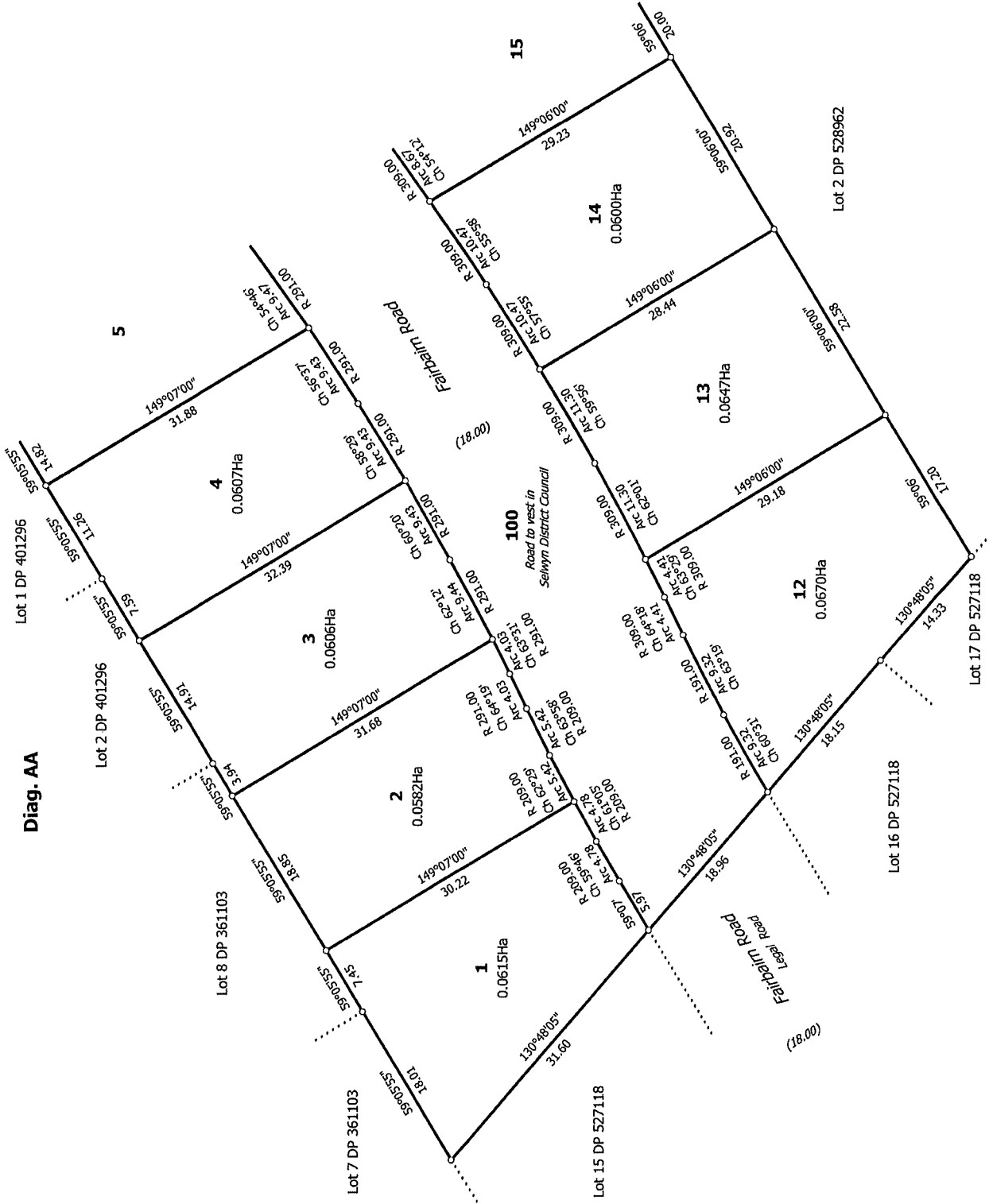
MEMORANDUM OF EASEMENTS

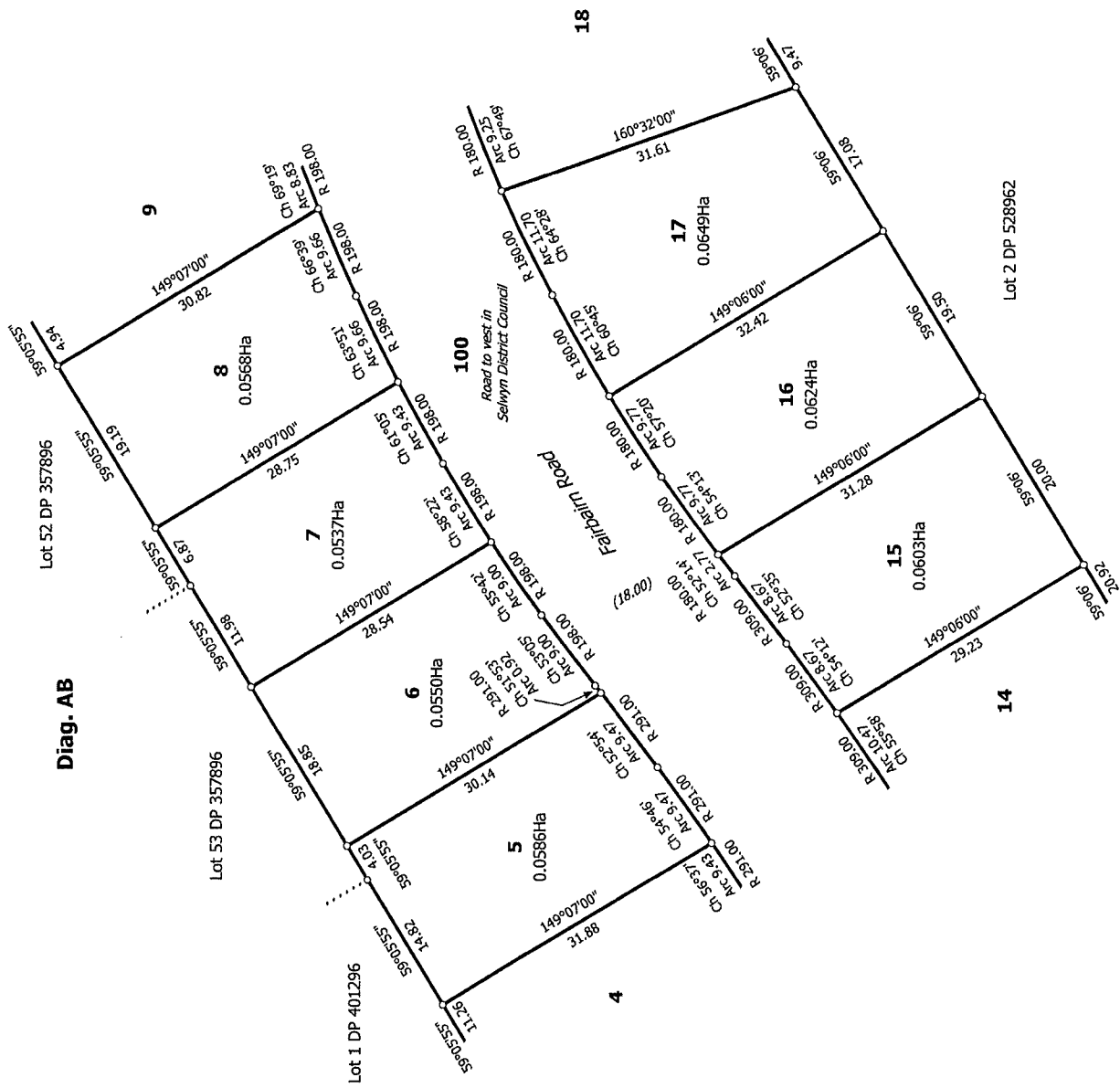
Purpose	Servient Tenement (Burdened Land)	Shown	Dominant Tenement (Benefited Land)
Right to convey electricity & telecommunications.	Lot 10	A	Lot 11





Diag. AA





T 3/4

Land District: Canterbury

Digitally Generated Plan

Generated on: 14/02/2020 12:24am Page 5 of 6

Lots 1-19, 50 & 100 Being a Subdivision of Lot 1 DP 528962

Surveyor: Christopher David Hawes  
Firm: Davie Lovell-Smith Ltd

Title Plan  
LT 546091  
DRAFT

