



# Title Plan - LT 538913

---

**Survey Number** LT 538913  
**Surveyor Reference** 710811: #582 SRR  
**Surveyor** Brendan John Hurring  
**Survey Firm** Calibre Consulting Limited  
**Surveyor Declaration**

---

## Survey Details

**Dataset Description** Lots 1 to 50 and Lots 100 to 103 being a Subdivision of Lot 22 DP 65499  
**Status** Initiated  
**Land District** Canterbury **Survey Class** Class A  
**Submitted Date** **Survey Approval Date**  
**Deposit Date**

---

## Territorial Authorities

Selwyn District

---

## Comprised In

RT CB38B/1019

---

## Created Parcels

Parcels	Parcel Intent	Area	RT Reference
Lot 1 Deposited Plan 538913	Fee Simple Title	0.0655 Ha	900040
Lot 2 Deposited Plan 538913	Fee Simple Title	0.0655 Ha	900041
Lot 3 Deposited Plan 538913	Fee Simple Title	0.0655 Ha	900042
Lot 4 Deposited Plan 538913	Fee Simple Title	0.0655 Ha	900043
Lot 5 Deposited Plan 538913	Fee Simple Title	0.0684 Ha	900044
Lot 6 Deposited Plan 538913	Fee Simple Title	0.0671 Ha	900045
Lot 7 Deposited Plan 538913	Fee Simple Title	0.0655 Ha	900046
Lot 8 Deposited Plan 538913	Fee Simple Title	0.0707 Ha	900047
Lot 9 Deposited Plan 538913	Fee Simple Title	0.0794 Ha	900048
Lot 10 Deposited Plan 538913	Fee Simple Title	0.0621 Ha	900049
Lot 11 Deposited Plan 538913	Fee Simple Title	0.0650 Ha	900050
Lot 12 Deposited Plan 538913	Fee Simple Title	0.0651 Ha	900051
Lot 13 Deposited Plan 538913	Fee Simple Title	0.0663 Ha	900052
Lot 14 Deposited Plan 538913	Fee Simple Title	0.0700 Ha	900053
Lot 15 Deposited Plan 538913	Fee Simple Title	0.0665 Ha	900054
Lot 16 Deposited Plan 538913	Fee Simple Title	0.0665 Ha	900055
Lot 17 Deposited Plan 538913	Fee Simple Title	0.0665 Ha	900056
Lot 18 Deposited Plan 538913	Fee Simple Title	0.0665 Ha	900057
Lot 19 Deposited Plan 538913	Fee Simple Title	0.0665 Ha	900058
Lot 20 Deposited Plan 538913	Fee Simple Title	0.0665 Ha	900059
Lot 21 Deposited Plan 538913	Fee Simple Title	0.0665 Ha	900060
Lot 22 Deposited Plan 538913	Fee Simple Title	0.0665 Ha	900061
Lot 23 Deposited Plan 538913	Fee Simple Title	0.0665 Ha	900062
Lot 24 Deposited Plan 538913	Fee Simple Title	0.0665 Ha	900063

# Title Plan - LT 538913

---

## Created Parcels

Parcels	Parcel Intent	Area	RT Reference
Lot 25 Deposited Plan 538913	Fee Simple Title	0.0852 Ha	900064
Lot 26 Deposited Plan 538913	Fee Simple Title	0.0683 Ha	900065
Lot 27 Deposited Plan 538913	Fee Simple Title	0.0653 Ha	900066
Lot 28 Deposited Plan 538913	Fee Simple Title	0.0654 Ha	900067
Lot 29 Deposited Plan 538913	Fee Simple Title	0.0653 Ha	900068
Lot 30 Deposited Plan 538913	Fee Simple Title	0.0653 Ha	900069
Lot 31 Deposited Plan 538913	Fee Simple Title	0.0756 Ha	900070
Lot 32 Deposited Plan 538913	Fee Simple Title	0.0582 Ha	900071
Lot 33 Deposited Plan 538913	Fee Simple Title	0.0578 Ha	900072
Lot 34 Deposited Plan 538913	Fee Simple Title	0.0579 Ha	900073
Lot 35 Deposited Plan 538913	Fee Simple Title	0.0582 Ha	900074
Lot 36 Deposited Plan 538913	Fee Simple Title	0.0600 Ha	900075
Lot 37 Deposited Plan 538913	Fee Simple Title	0.0490 Ha	900076
Lot 38 Deposited Plan 538913	Fee Simple Title	0.0449 Ha	900077
Lot 39 Deposited Plan 538913	Fee Simple Title	0.0449 Ha	900078
Lot 40 Deposited Plan 538913	Fee Simple Title	0.0449 Ha	900079
Lot 41 Deposited Plan 538913	Fee Simple Title	0.0449 Ha	900080
Lot 42 Deposited Plan 538913	Fee Simple Title	0.0449 Ha	900081
Lot 43 Deposited Plan 538913	Fee Simple Title	0.0489 Ha	900082
Lot 44 Deposited Plan 538913	Fee Simple Title	0.0490 Ha	900083
Lot 45 Deposited Plan 538913	Fee Simple Title	0.0449 Ha	900084
Lot 46 Deposited Plan 538913	Fee Simple Title	0.0449 Ha	900085
Lot 47 Deposited Plan 538913	Fee Simple Title	0.0449 Ha	900086
Lot 48 Deposited Plan 538913	Fee Simple Title	0.0450 Ha	900087
Lot 49 Deposited Plan 538913	Fee Simple Title	0.0449 Ha	900088
Lot 50 Deposited Plan 538913	Fee Simple Title	0.0490 Ha	900089
Lot 100 Deposited Plan 538913	Vesting on Deposit for Local Purpose Reserve	0.0214 Ha	900090
Lot 101 Deposited Plan 538913	Vesting on Deposit for Local Purpose Reserve	0.0327 Ha	900091
Lot 103 Deposited Plan 538913	Fee Simple Title	0.0005 Ha	900092
Area A Deposited Plan 538913	Easement		
Lot 102 Deposited Plan 538913	Vesting on Deposit for Road	0.9100 Ha	
<b>Total Area</b>		<b>3.9987 Ha</b>	

# Schedule / Memorandum

Land Registration District

**Canterbury**

Survey Number

**LT 538913**

Territorial Authority (the Council)

**Selwyn District**

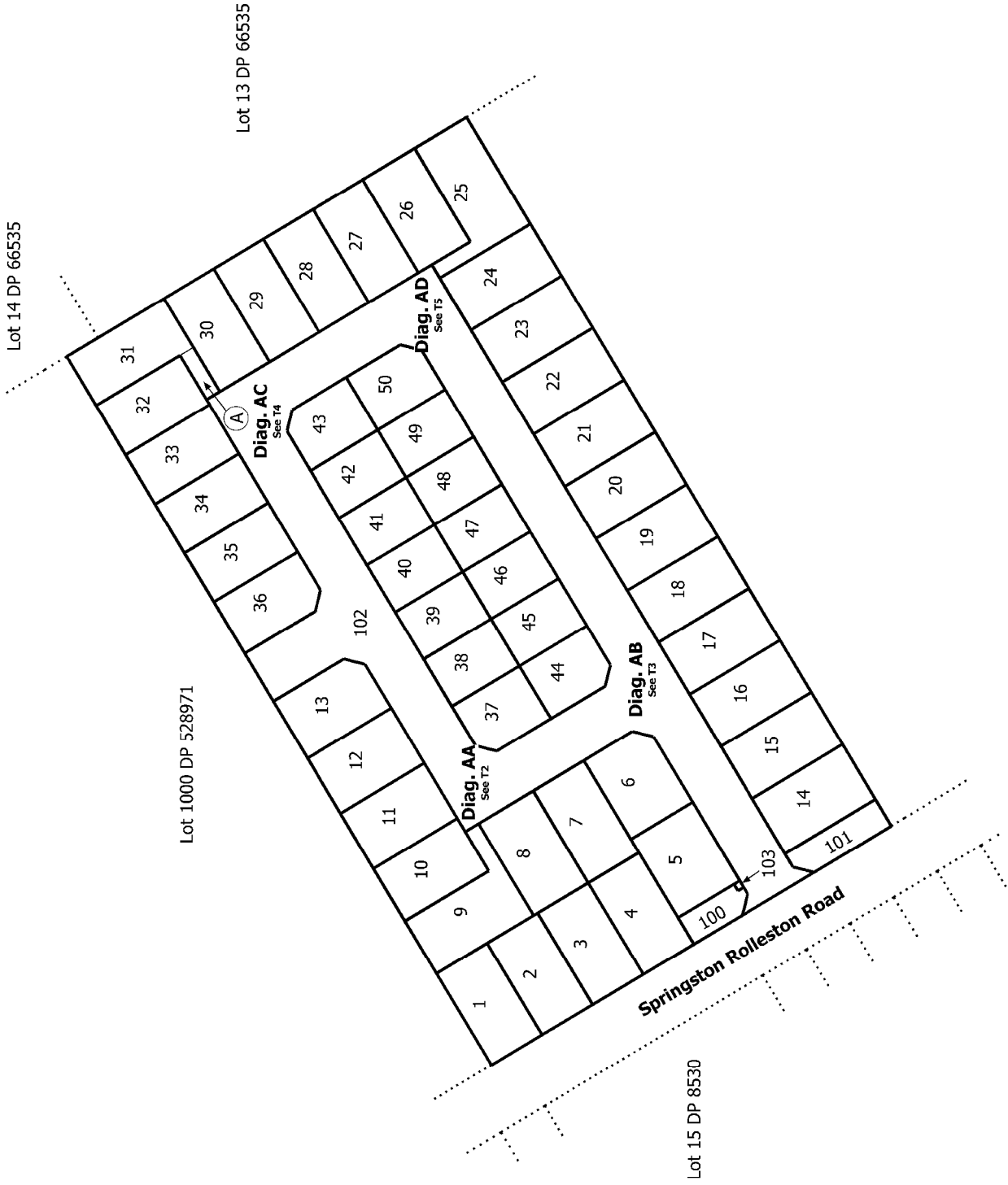
## Memorandum of Easements

Last Edited: 29 Jul 2019 17:27:03

<u>Purpose</u>	<u>Shown</u>	<u>Servient Tenement (Burdened Land)</u>	<u>Dominant Tenement (Benefited Land)</u>
Right of Way	A	Lot 31	Lot 32
Right to convey electricity, telecommunications, water	A	Lot 31	Lot 32
Right to drain water, sewage	A	Lot 31	Lot 32



Diag. A



Ref. 710811

Land District: Canterbury

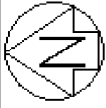
Digitally Generated Plan

Generated on: 23/07/2019 5:41pm Page 4 of 8

Lots 1 to 50 and Lots 100 to 103 being a Subdivision of Lot 22 DP 65499

Surveyor: Brendan John Hurring  
Firm: Callibre Consulting Limited

Title Plan  
LT 538913  
DRAFT



Diag. AA



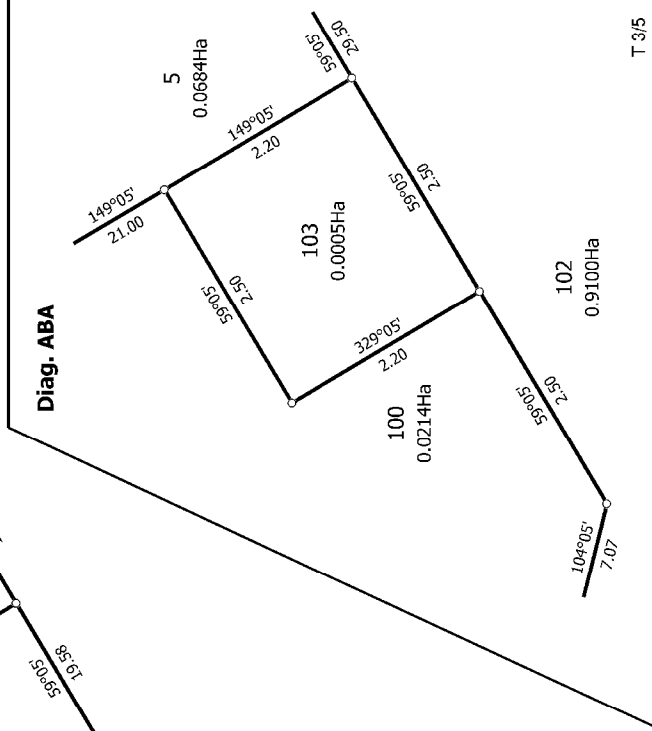
<p>Land District: Canterbury</p> <p><b>Digitally Generated Plan</b></p> <p>Generated on: 23/07/2019 5:41pm Page 5 of 8</p>	<p><b>Lots 1 to 50 and Lots 100 to 103 being a Subdivision of Lot 22 DP 65499</b></p>	<p>Surveyor: Brendan John Hurring</p> <p>Firm: Callibre Consulting Limited</p>	<p><b>Title Plan</b></p> <p><b>LT 538913</b></p> <p><b>DRAFT</b></p>
----------------------------------------------------------------------------------------------------------------------------	---------------------------------------------------------------------------------------	--------------------------------------------------------------------------------	----------------------------------------------------------------------



Diag. AB



Diag. ABA



Land District: Canterbury

**Digitally Generated Plan**  
Generated on: 23/07/2019 5:41pm Page 6 of 8

**Lots 1 to 50 and Lots 100 to 103 being a Subdivision of Lot 22 DP 65499**

Surveyor: Brendan John Hurring  
Firm: Callibre Consulting Limited

**Title Plan**  
LT 538913  
DRAFT



Diag. AC





Diag. AD



Lot 13 DP 66535

Lot 2 DP 510575

T 5/5