

# DOCUMENT TRANSMITTAL NOTICE



**Project** Silverstone Sub-Division - 493 & 499 Springston Rolleston Road

**Project No** 4006097

**Discipline** Lighting Design

**Page** 1 of 1

**Year**  
**Month**  
**Day**

Date of Issue							
21	21	21	21				
3	4	5	6				
11	16	3	22				

Doc. No.	Document Title	Rev	Issue							
			A	B	B	C				
400122	Silverstone Sub-Division 493-499 - Sheet 1	C	A	B	B	C				
400122	Silverstone Sub-Division 493-499 - Sheet 2	C	A	B	B	C				
	Pole Offset drawing	A	A							
400122	Autocad DWG Format	B			B					
	Producer Statement	A	A							
	Design Report	A	A							
	Street Lighting Specification	A	A							
	12.0m Road - Road 1 - Single Sided	A	A							
	24.0m Road - Road 1 - Staggered	A	A							
	16.0m Road - Road 2 - Staggered	A	A							
	14.0m Road - Road 3 - 1.3m Offset - Single Sided	A	A							
	14.0m Road - Road 3 - 1.3m Offset - Staggered	A	A							
	14.0m Road - Road 3 - 5.1m Offset - Single Sided	A	A							
	14.0m Road - Road 3 - 5.1m Offset - Staggered	A	A							
	16.0m Road - Road 4 - Staggered	A	A							
	14.0m Road - Road 5 - Staggered	A	A							
	AGI Compliance Plot	B	A		B					
	Windsor Urban Pole Drawing - Pole L1	A	A							
	Windsor Urban Pole Drawing - Pole L2-L3-L4	A	A							
	Windsor Urban - Pole Producer Statement	A	A							
	Pole Structural Compliance Certificate - Windsor Urban	A	A							
	Windsor Urban - Luminaire Producer Statement	A	A							
224	Lighting Completion Form (Windsor Urban)									
	Lighting Completion Form (Installer)									
	Orion Test Certificate									
	Certificate of Compliance									
	As-Built Drawings									
Comments										

DELIVERY - Company Name	Attention	COPIES							
Urban Estates	Kim Sanders	#	#	#	#				
Windsor Urban Ltd.	Marcus Brandrick	#	#	#	#				
Selwyn District Council (Representative)	Brendan Hayman		#		#				
<b>Reason For Issue</b>		P	A	C	A				

P - Preliminary / A - Approval / T - Tender / C - Construction / X - 224 / RQ -Requested

### Document Type Symbol

PDF #  
A4 Copy \*  
A3 Copy \*\*  
A1 Copy \*\*\*

### Connetics Ltd

11 Islington Avenue  
Islington  
Christchurch 8042

P: (03) 353 7200  
F: (03) 353 7201

E: www.connetics.co.nz

**LIGHTING SCHEDULE**

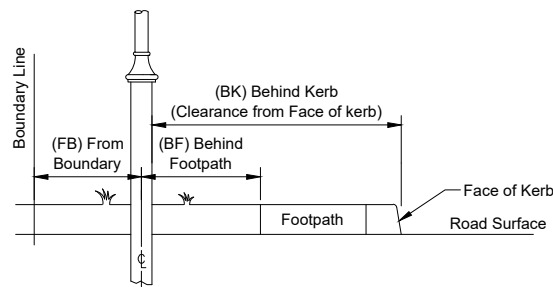
- L1 Supply and install new luminaires on new column. (See Luminaire & Column Notes 1 to 4)  
 Luminaire: 2 x Windsor Urban PALMERSTON-C - P-LED 21W LED 325mA Luminaire with **7032** optic 4000k, Color: Black  
 Column: 7.5m MH Standard Decorative Stepped C Column complete with **Double** 1.3m Silverstone outreach arm and Hau mid & Nui Base casting, Color: Black  
 Connection: Connect to U/G SLN.
- L2 Supply and install new luminaire on new column. (See Luminaire & Column Notes 1 to 4)  
 Luminaire: Windsor Urban PALMERSTON-C - P-LED 33W LED 400mA Luminaire with **7032** optic 4000k, Color: Black  
 Column: 7.5m MH Standard Decorative Stepped C Column complete with **Single** 1.3m Silverstone outreach arm and Hau mid & Nui Base casting, Color: Black  
 Connection: Connect to U/G SLN.
- L3 Supply and install new luminaire on new column. (See Luminaire & Column Notes 1 to 4)  
 Luminaire: Windsor Urban PALMERSTON-C - P-LED 21W LED 325mA Luminaire with **7032** optic 4000k, Color: Black  
 Column: 7.5m MH Standard Decorative Stepped C Column complete with **Single** 1.3m Silverstone outreach arm and Hau mid & Nui Base casting, Color: Black  
 Connection: Connect to U/G SLN.
- L4 Supply and install new luminaire on new column. (See Luminaire & Column Notes 1 to 4)  
 Luminaire: Windsor Urban PALMERSTON-C - P-LED 21W LED 325mA Luminaire with **7022** optic 4000k, Color: Black  
 Column: 7.5m MH Standard Decorative Stepped C Column complete with **Single** 1.3m Silverstone outreach arm and Hau mid & Nui Base casting, Color: Black  
 Connection: Connect to U/G SLN.

**MAXIMUM DESIGN SPACING**

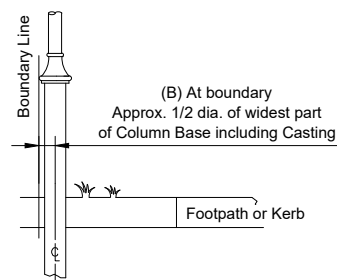
Street Name	Width	Arrangement Type*	Max Spacing
Road 1	12.0m	Single Sided	61.2m
Road 1	24.0m	Staggered	49.8m
Road 2	16.0m	Staggered	62.8m
Road 3 - 1.3m Offset	14.0m	Single Sided	61.1m
Road 3 - 1.3m Offset	14.0m	Staggered	61.1m
Road 3 - 5.1m Offset	14.0m	Single Sided	61.2m
Road 3 - 5.1m Offset	14.0m	Staggered	64.1m
Road 4	16.0m	Staggered	54.7m
Road 3-5	14.0m	Staggered	54.6m

\* = Arrangement type as per AS/NZS 1158.2:2020 Fig. 5.1

**TYPICAL COLUMN POSITION:**



Column to be installed from Boundary Line, Behind Footpath or from Face of Kerb



Column to be installed at Boundary Line

**SYMBOLS LEGEND:**

- LX Lighting Schedule Reference
  - XXW Luminaire Wattage
  - P1 Column Identification
  - 0.0m-XX Column offset
  - X° Luminaire Tilt from the horizontal (See Adjustment Table)
- Offset Descriptions**
- B At Boundary
  - BK Behind Kerb
  - M Center of Median

For Decorative Tubular and Octagonal Column	
With Decorative Arms and 0° Spigot*	
Value Shown on Plan	Adjustment on Luminaire
10°	10°
5°	5°
0°	0°
-5°	-5°

\* As per CCC and SDC Standard Column Requirements

**KEY PLAN**



**SYMBOLS:**

- E Existing column, outreach arm and luminaire to remain.
- Lx New column, Single outreach arm and luminaire.

**LUMINAIRE & COLUMN NOTES:**

- Luminaire to be supplied with an integral TMS compatible dimmable DALI driver suitable for operating at the specified load and a prewired 7 pin NEMA Socket and complete with shorting cap.
- Luminaire to have an IP rating of IP66 unless stated otherwise.
- Luminaire colour temperature to be 4000K
- Luminaire to have Identification label applied at time of installation.

**NOTES:**

- Road illumination is designed to comply with AS/NZS 1158; subcategory PR4, SDC "Code of Practice Part 11" and NZTA M30. Refer to lighting specification for lighting installation requirements.
- Consult the designer for any lighting installation works that conflict on site. eg. recorded or unrecorded services.
- On completion documentation, record GPS location of all new Lighting columns.
- All redundant recovered streetlight poles and lanterns shall be removed to the store of the SDC Maintenance Contractor (Connetics Ltd, 11 Islington Avenue, Islington - Contact: Martin Msimanga).
- New column location to be marked by the main contractor surveyor.
- Existing Services Identified in this design are indicative only and it is the contractor responsibility to locate any existing services by contacting BeforeUdig at <https://www.beforeudig.co.nz> before the start of any underground work.

**SPUNLITE NOTE:**

The use of this **FREE** Lighting design, is authorised by Windsor Urban Ltd and Spunlite Poles Ltd, and is conditional upon the specified lighting items (columns and luminaires), being purchased directly from Windsor Urban Ltd and Spunlite Poles Ltd, or our nominated agents. All nominated installing agents are to contact Windsor Urban Ltd and Spunlite Poles Ltd, to obtain product prices related to this project.

Any use of alternative manufacturer's products, differing from those listed in this design, and installed by any contractor, will automatically forfeit the right to use this intellectual property (lighting design).

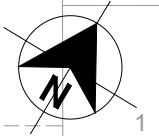
Windsor Urban Ltd and Spunlite Poles Ltd hold all copyrights to any of our designs and manufactured products in accordance with the Berne Convention.

The lighting designer reserves the right to request that any alternative products, sourced from a non-listed manufacturer, be removed and replaced with the specified products, prior to any audit being conducted.

**ISSUED FOR APPROVAL**  
 Tuesday, June 22, 2021 10:58:23 AM  
**NOT FOR CONSTRUCTION**

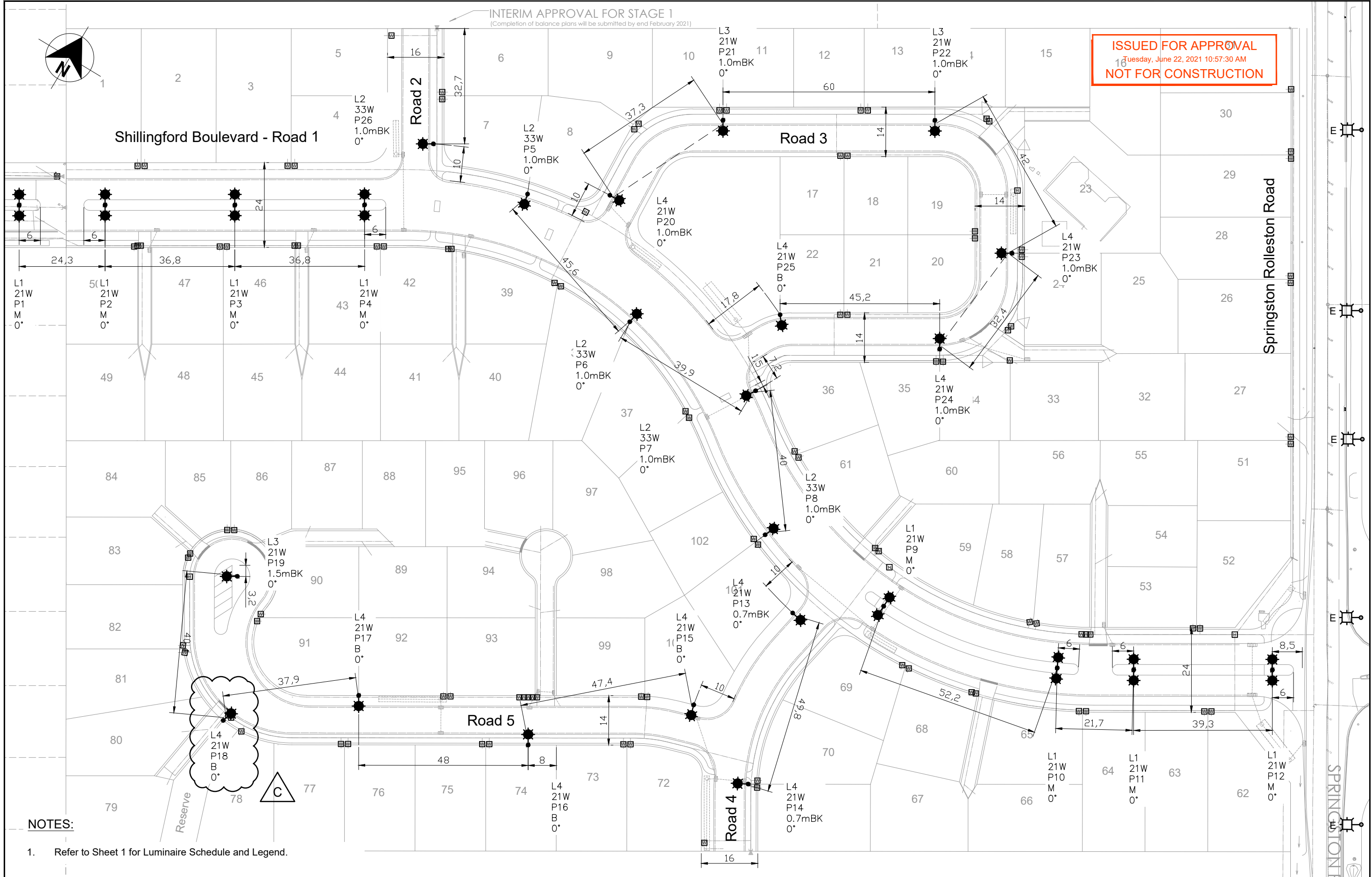
<p>WINDSOR URBAN LTD. ALL RIGHTS RESERVED. UNAUTHORISED USE PROHIBITED</p>	Rev	Description	Date	Des	Dn	Chk	Apd	Or Acp	Contractor	Designed	R. St-Denis / Conn	March 21	Scale	<p><b>STREETLIGHTING LAYOUT</b></p> <p>Silverstone Sub-Division 493 &amp; 499 Springston Rolleston Road Rolleston</p>	<p>611 Halswell Junction Rd, Hornby, Christchurch, NZ Phone: (03) 349-7653 Fax: (03) 349-6529 Freephone: (800) 945-945 Web: www.windsorurban.co.nz</p>	Size	Drawing Number	Sheet
	A	Issued to Client for Comments	11/03/21	RSD	RSD	-	-	-	-	Drawn	R. St-Denis / Conn	March 21	1:1000			A3	400122	1/2
	B	Issued for SDC Approval	16/04/21	RSD	RSD	-	-	-	-	Checked	A. Kudinov / Conn	April 21						
	C	Column P18 Relocated at Reserve Shared Boundary	22/06/21	RSD	RSD	-	-	-	-	Approved	B. Hayman for SDC	-						
									Connetics	-	-		<b>C</b>					

1 : 1500  
1 : 1000



INTERIM APPROVAL FOR STAGE 1  
(Completion of balance plans will be submitted by end February 2021)

**ISSUED FOR APPROVAL**  
Tuesday, June 22, 2021 10:57:30 AM  
**NOT FOR CONSTRUCTION**



- NOTES:**
1. Refer to Sheet 1 for Luminaire Schedule and Legend.

**WINDSOR URBAN LTD.**  
ALL RIGHTS RESERVED.  
UNAUTHORISED USE PROHIBITED

Rev	Description	Date	Des	Dn	Chk	Apd	Or Apc	Contractor	Designed	R. St-Denis / Conn	March 21	Scale
A	Issued to Client for Comments	11/03/21	RSD	RSD	-	-	-	-	Drawn	R. St-Denis / Conn	March 21	1:1000
B	Issued for SDC Approval	16/04/21	RSD	RSD	-	-	-	-	Checked	A. Kudinov / Conn	April 21	
C	Column P18 Relocated at Reserve Shared Boundary	22/06/21	RSD	RSD	-	-	-	-	Approved	B. Hayman for SDC	-	
									Connetics	-	-	Revision
												<b>C</b>

**STREETLIGHTING LAYOUT**

Silverstone Sub-Division  
493 & 499 Springston Rolleston Road  
Rolleston

**windsorurban**  
LIGHTING FURNITURE  
611 Halswell Junction Rd, Hornby, Christchurch, NZ  
Phone: (03) 349-7653 Fax: (03) 349-6219 Freephone: (800) 845-845  
http://www.windsorurban.co.nz

Size	Drawing Number	Sheet
<b>A3</b>	<b>400122</b>	<b>2/2</b>

1 : 1000  
1 : 1500

Symbol	Qty	Label	Arrangement	Total Lamp Lumens	L/F	Description
	4	WH_11632 ELY-C LDDV 7032 33W	SINGLE	N.A.	0.800	Single
	3	WH_11630 ELY-C LDDV 7032 21W	SINGLE	N.A.	0.800	Single
	8	WH_11630 ELY-C LDDV 7032 21WD	BACK-BACK	N.A.	0.800	Double
	11	WH_11635 ELY-C LDDV 7022 21W	SINGLE	N.A.	0.800	Double

LumNo	Label	X	Y	Z	Orient	Tilt
1	WH_11630 ELY-C LDDV 7032 21WD	373100.884	797207.694	7.5	301.306	0
2	WH_11630 ELY-C LDDV 7032 21WD	373121.694	797220.227	7.5	301.036	0
3	WH_11630 ELY-C LDDV 7032 21WD	373153.21	797239.155	7.5	300.876	0
4	WH_11630 ELY-C LDDV 7032 21WD	373184.655	797258.15	7.5	300.811	0
5	WH_11630 ELY-C LDDV 7032 21WD	373369.218	797236.558	7.5	267.96	0
6	WH_11630 ELY-C LDDV 7032 21WD	373420.369	797246.807	7.5	295.561	0
7	WH_11630 ELY-C LDDV 7032 21WD	373439.155	797257.492	7.5	301.485	0
8	WH_11630 ELY-C LDDV 7032 21WD	373472.926	797277.736	7.5	300.824	0
9	WH_11632 ELY-C LDDV 7032 33W	373222.762	797284.583	7.5	281.311	0
10	WH_11632 ELY-C LDDV 7032 33W	373265.108	797268.295	7.5	81.738	0
11	WH_11632 ELY-C LDDV 7032 33W	373306.772	797269.856	7.5	240.256	0
12	WH_11632 ELY-C LDDV 7032 33W	373330.047	797236.628	7.5	67.663	0
13	WH_11630 ELY-C LDDV 7032 21W	373310.841	797361.821	7.5	301.425	0
14	WH_11635 ELY-C LDDV 7022 21W	373349.047	797340.811	7.5	212.347	0
15	WH_11635 ELY-C LDDV 7022 21W	373345.375	797307.02	7.5	120.017	0
16	WH_11635 ELY-C LDDV 7022 21W	373301.769	797291.892	7.5	315	0
17	WH_11630 ELY-C LDDV 7032 21W	373259.425	797330.976	7.5	299.896	0
18	WH_11635 ELY-C LDDV 7022 21W	373242.924	797296.259	7.5	2.384	0
19	WH_11635 ELY-C LDDV 7022 21W	373192.472	797282.806	7.5	211.333	0
20	WH_11635 ELY-C LDDV 7022 21W	373337.628	797184.8	7.5	284.04	0
21	WH_11635 ELY-C LDDV 7022 21W	373303.178	797151.006	7.5	122.083	0
22	WH_11635 ELY-C LDDV 7022 21W	373254.771	797138.174	7.5	300.965	0
23	WH_11635 ELY-C LDDV 7022 21W	373225.682	797112.473	7.5	79.902	0
24	WH_11630 ELY-C LDDV 7032 21W	373208.014	797149.454	7.5	209.238	0
25	WH_11635 ELY-C LDDV 7022 21W	373348.339	797221.639	7.5	346.865	0
26	WH_11635 ELY-C LDDV 7022 21W	373362.3	797173.541	7.5	205.869	0

